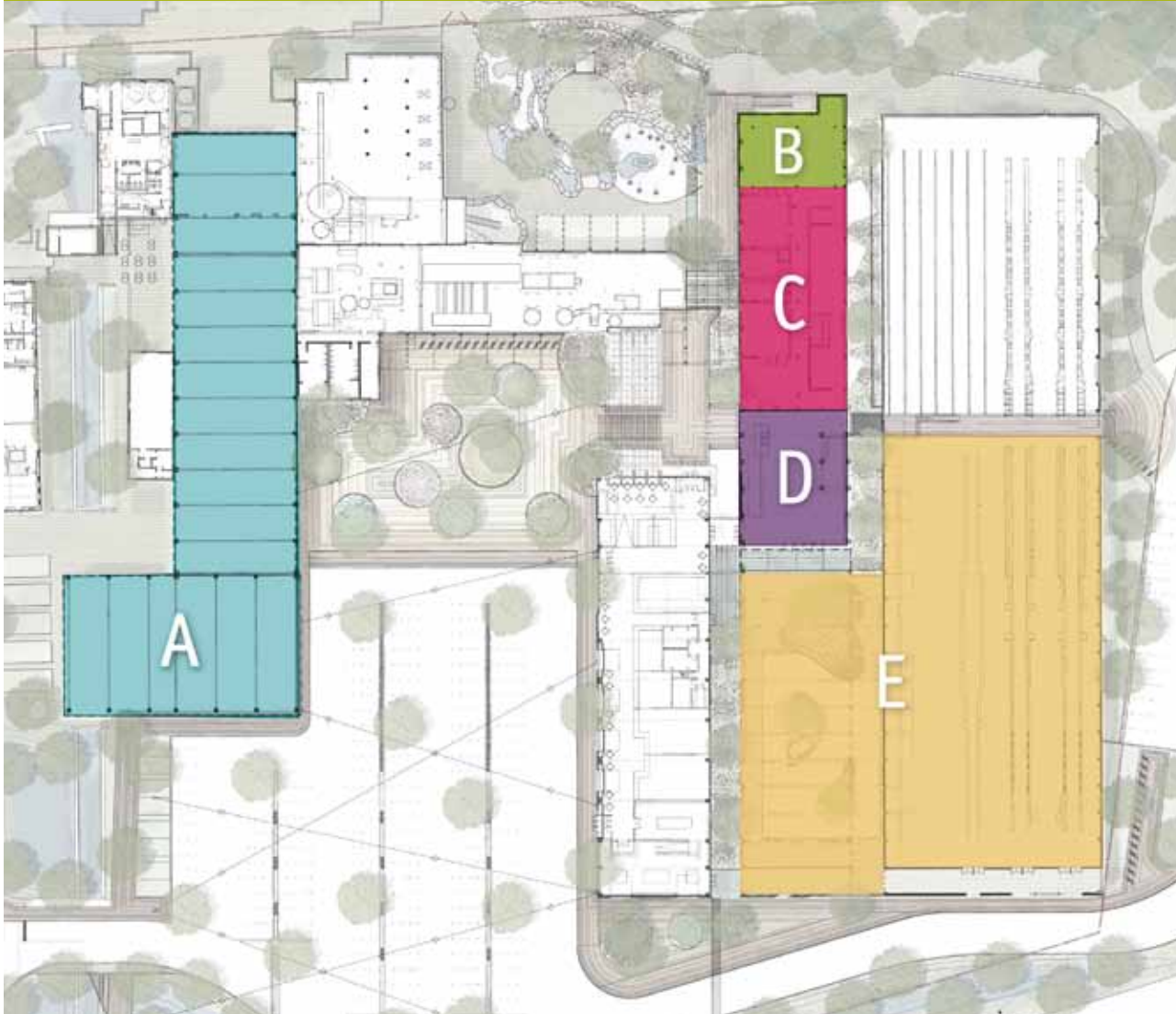


# EVERGREEN BRICK WORKS EVENT SPACE LOCATIONS



Nestled in Toronto's lush ravines in a setting of awe-inspiring heritage buildings, Evergreen Brick Works is the ideal venue for your special event. Our space offers various capacities, from an intimate gathering in the BMO Atrium, a 700 seated dinner in Holcim Gallery & Koerner Gardens, and up to 2,000 standing reception in the Pavilions.

For more information contact  
 Wendy Gamble, Senior Manager, Events  
**wgamble@evergreen.ca**  
 416-596-1495 x329



Tom Arban

A	The Pavilions	D	Young Welcome Centre
B	BMO Atrium	E	Holcim Gallery & Koerner Gardens
C	Meeting Rooms		

# A THE PAVILIONS

## Location

Large, open-air pavilions located on the west portion of the site.

## Space Size

27,000 sq. ft.

## Occupancy Load

- Non-fixed seats: 2,000

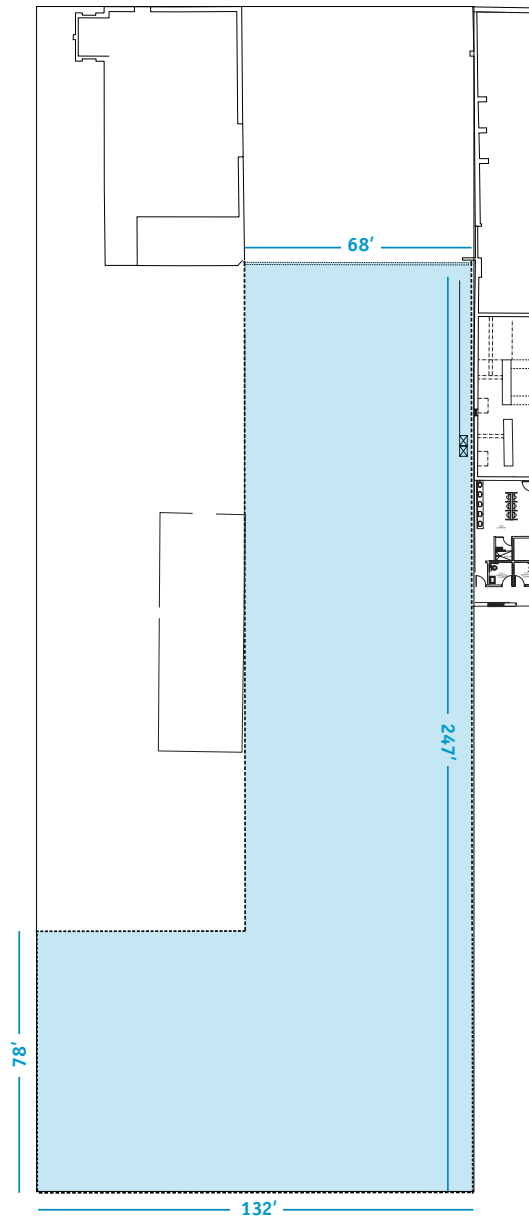
## Event Types

Large-scale events, festivals, barbeques, picnics, camps, fundraisers, fashion shows, etc.

## Description

This large L-shaped building is centrally located and provides covered outdoor space for flexible venues. The building is close to parking and accommodates catering drop-offs.

The north end of the building provides a gateway to The Frances and Tim Price Terrace and Weston Gardens and offers a stunning view of the parkland. The space is available seasonally.



# B BMO ATRIUM



## Location

Ground floor of the Centre for Green Cities.

## Space Size

2,850 sq. ft.

## Occupancy Load

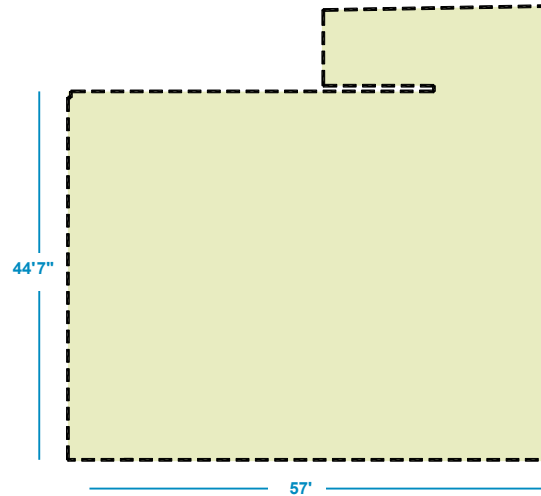
- Non-fixed seats: 225
- Dining: 150

## Event Types

Adaptable space is used for a range of events, including workshops, meetings, conferences, retreats, dinners, galas, theatre shows, exhibits, film screenings, etc.

## Description

The BMO Atrium offers a double ceiling height space on the main floor of the Centre for Green Cities, the new LEED® Platinum building onsite. It is in close proximity to the catering kitchen and fully accessible washrooms. The space overlooks Chimney Court and offers stunning views of the ravine slope. The space is available year-round.



# C MEETING ROOMS

## Location

Second floor of the Centre for Green Cities.

## Occupancy Load

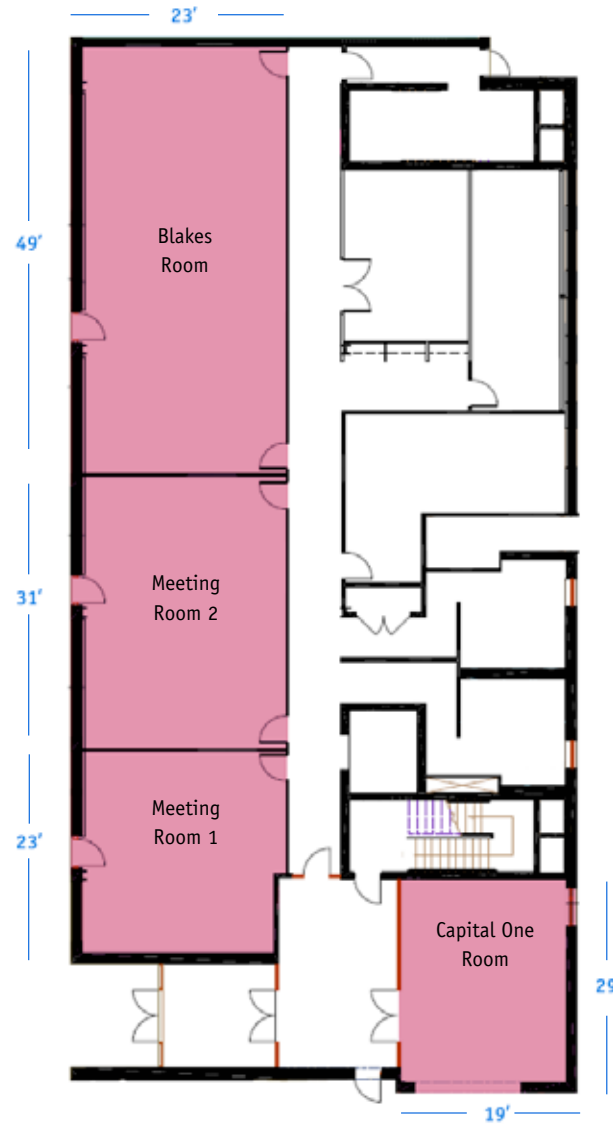
- Meeting Room #1: 15 people boardroom style
- Meeting Room #2: 40 people theatre style
- Blakes Room: 70 people theatre style
- Capital One Room: 15 people boardroom style

## Event Types

Diverse and adaptable spaces. Ideal for boardroom meetings, lectures, conferences, corporate team building, presentations, special exhibits and workshops.

## Description

Located in the Centre for Green Cities, a LEED® Platinum building, our four Meeting Rooms range in size and room configurations. Meeting Rooms are equipped with large whiteboard walls and A/V capabilities. Suitability ranges from intimate meetings to 70 person theatre style gatherings. Three rooms have dynamic views into Welcome Court and Chimney Court with access to a functional balcony. Belong Catering is the exclusive supplier for all meetings. The rooms are available year-round.



# D YOUNG WELCOME CENTRE

## Location

Central location at the main entrance, south end of the Centre for Green Cities.

## Space Size

3,445 sq. ft.

## Occupancy Load

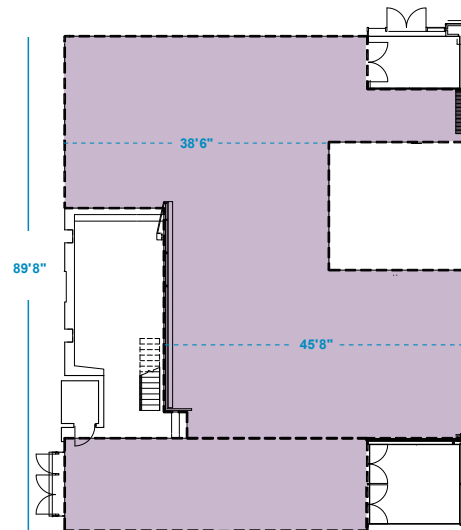
- Non-fixed seats: 300
- Dining: 80

## Event Types

Special exhibits, workshops, parties, receptions and film screenings, etc.

## Description

The main point of orientation for visitors to Evergreen Brick Works, the Young Welcome Centre is an information centre hosting maps and directional signage. The space also houses both permanent and temporary exhibits focused on subjects such as climate change and green design. Two large permanent heritage artifacts flank the sides of the building, the historic John Price brick press and the Foreman's shed, which pay tribute to the site's industrial heritage. The space is available year-round.



# E HOLCIM GALLERY & KOERNER GARDENS

## Location

Connected to one another, Holcim Gallery is on the east end and Koerner Gardens is south of the Centre for Green Cities & Young Welcome Centre.

## Occupancy Load

- Non-fixed seats: 2,000+
- Dining: 700

## Event Types

Parties, workshops, private skating events, receptions, etc.

## Description

Holcim Gallery is one of the most dramatic areas within Evergreen Brick Works. The building features long tunnel kilns and drying tunnels lit by architectural lighting. Interpretive signing explains the stories of the brick-making process. This building speaks to the rich industrial heritage of the site. To the west is Koerner Gardens, which is open-air; the roof has been removed to allow nature to reclaim this building. The space includes a series of large planting gardens filled with native and edible plants. The space can be partially tented and heated to accommodate changes in weather, should you choose to do so. These spaces are available seasonally.

